

**BLDG 570**  
**Reese Technology Center**  
**Lubbock, Texas 79416**

**Premises:**

939 SF

**Rental Rate:** \$8/SF/MG

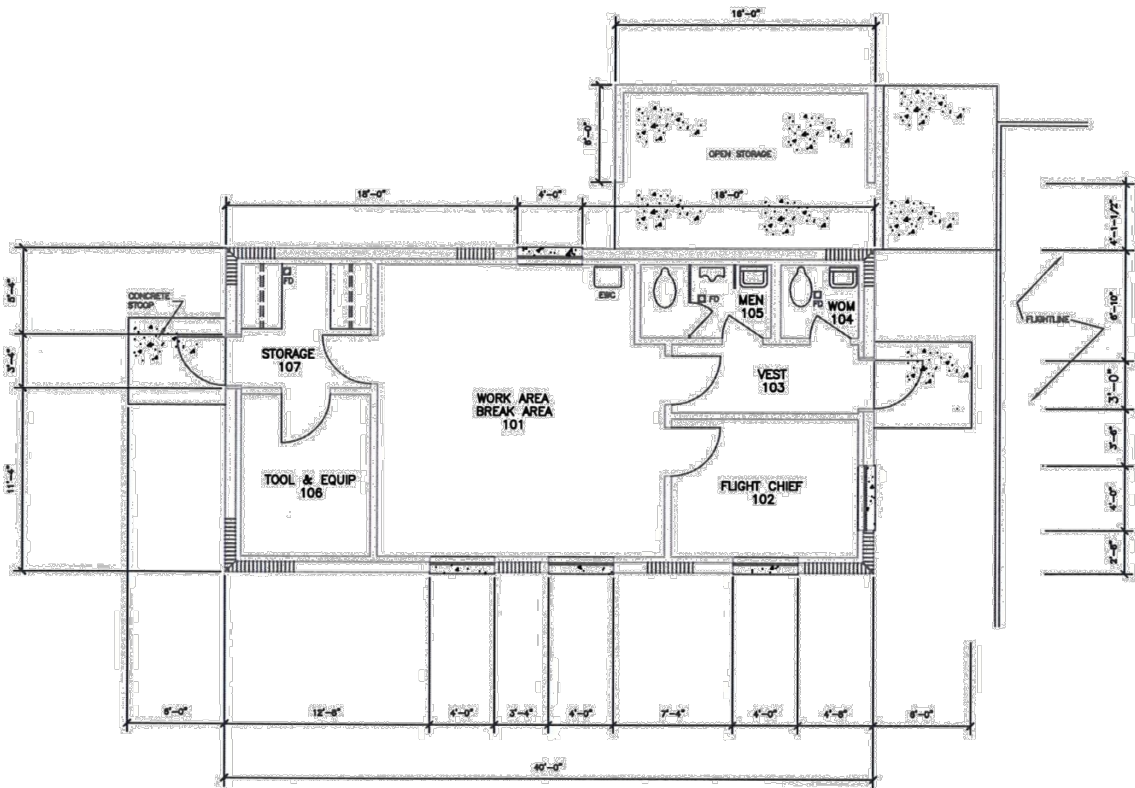
**Availability:** Now

**Features:**

- Former Flight Shack
- Office/Lab/Special Purpose
- Located on Flight Line
- Cinder Block Walls



**BUILDING #570**  
**APPROXIMATELY 939 SF**



## Property Amenities

<b>BUILDING:</b>	<b>570</b>
<b>ADDRESS:</b>	701 Runway Drive. Lubbock, TX 79416
<b>LEASE RATE:</b>	\$8 PSF per Year "AS IS"
<b>LEASE TYPE:</b>	Modified Gross
<b>SECURITY DEPOSIT:</b>	Equal to First Month's Rent
<b>BUILDING TYPE:</b>	Office / Lab
<b>ZONING:</b>	Commercial
<b>PARKING SPACES:</b>	Ample
<b>SQUARE FOOTAGE (APPROX):</b>	939 SF
<b>YEAR BUILT:</b>	1987
<b>STORIES:</b>	1
<b>DIMENSIONS:</b>	20 x 40
<b>CONSTRUCTION TYPE:</b>	Concrete
<b>ROOF TYPE:</b>	B/UP MD
<b>EXTERIOR TYPE:</b>	Masonry Concrete Walls
<b>FIBER:</b>	Wireless Connection/ Fiber Nearby
<b>ELECTRIC:</b>	South Plains Electric Cooperative
<b>POWER CAPACITY:</b>	208 Volt 3 Phase
<b>GAS:</b>	Atmos Energy
<b>WATER:</b>	City of Lubbock
<b>WATER LINE:</b>	2" Line
<b>SEWER:</b>	City of Lubbock
<b>SEWER LINE:</b>	4" Line
<b>NEAREST INTERSTATE:</b>	Interstate 27
<b>DISTANCE:</b>	10 Miles
<b>NEAREST HIGHWAY:</b>	State Highway 114
<b>DISTANCE:</b>	1 Mile - Direct entrance to airfield
<b>NEAREST RAIL:</b>	Permian Basin Railway
<b>DISTANCE:</b>	1 Mile



9801 Reese Blvd, Ste 200, Lubbock, TX 79416  
tel 806.885.6592 ■ [www.reesecenter.com](http://www.reesecenter.com)